

Specifications

General	
Frequency Range	VHF:136-156/150-174MHz UHF:340-370/370-390/400-430/420-450/440-470MHz
Channels Capacity	99
Channel Spacing	12.5KHz
Working Voltage	DC13.8V(±15%)
Frequency Stability	±0.5ppm
Antenna Impedance	50Ω
Weight	9.7kg
Dimensions	485(L)*375(W)*90(H) mm
Transmitter	
Power Output	50W
4FSK Modulation	4K00F1E
Vocoder	AMBE+2™
Receiver	
Digital Sensitivity	3%BER≤0.35uV
Intermodulation	≥70dB
Adjacent Channel Selectivity	≥70dB
Spurious Suppression	≥70dB
Audio Power	2W(8Ω)
Max Audio Power	10W(8Ω) external
Blcoking	≥95dB

BelFone reserves the right to update or change the above specifications without any prior notice. For more information please visit www.belfone.com.

BelFone reserve the right to change any specifications without warning due to the technology improvement.For more information, please visit www.belfone.com or contact marketing Fujian Beifeng Teleco@belfone.com



Fujian BelFone Communications Technology Co., Ltd.
 Add: A15, Huaqiao Economic Development Zone, Shuangyang,
 Luojiang, Quanzhou, Fujian, China 36200
 Tel: +86 595 28396717
 Fax: +86 595 22771635
 Email: overseas@belfone.com
 Website: www.belfone.com



To order in your local place, please contact:



BF-TR8050 DMR Repeater

BelFone BF-TR8050 is a DMR high power repeater. With IP multi-site connections, BF-TR8050 can rapidly establish an extensive network for radio communications, while its strong anti-interference ability effectively secures the stability and privacy of the network. The high repeating power makes sure that the network covers every blind area and penetrates every obstacle.

- 50W High Repeating Power
- Strong Anti-interference Ability
- Good Heat Dispersion
- IP Multi-site Connections (Optional)

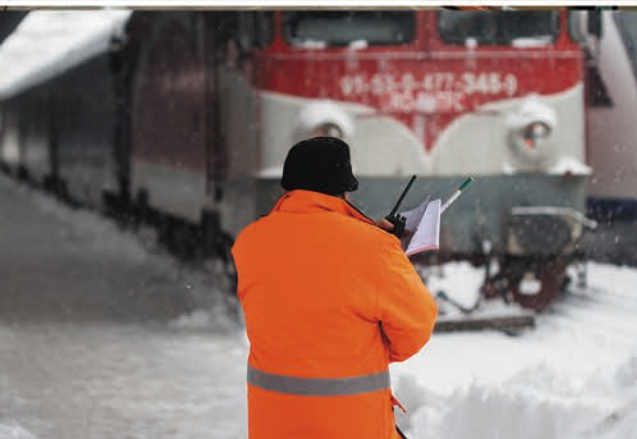
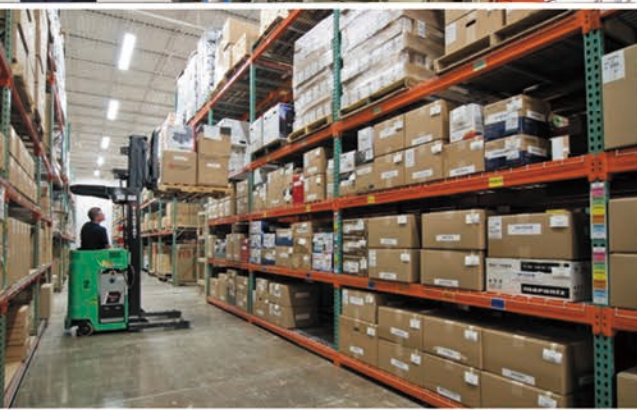


www.belfone.com



BF-TR8050

DMR Repeater



Highlights

TDMA True 2 Timeslots

TDMA true two timeslots technology effectively doubles frequency efficiency, allowing BF-TR8050 to repeat two signals simultaneously. Repeating capacity is doubled.

IP Multi-site Connection (Optional)

Support IP connection with other devices for multi-site connections and remote control. A private network can be quickly established and the coverage is further extended.

Strong Anti-interference Ability

This delivers more stability and accuracy to the network. The users can enjoy uninterrupted, private communications.

50W Maximum Repeating Power

The 50W maximum repeating power can effectively extend the network coverage with less setup equipment.

99 Channels

BF-TR8050 supports a maximum of 99 channels, providing efficient radio network control for different scenarios.

Good Heat Dispersion

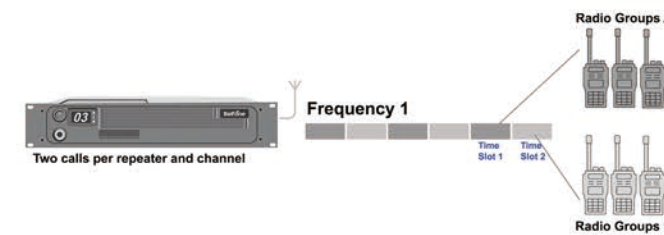
High quality built-in fans provide sufficient airflow for operation within the specified temperature range without derating.

Features

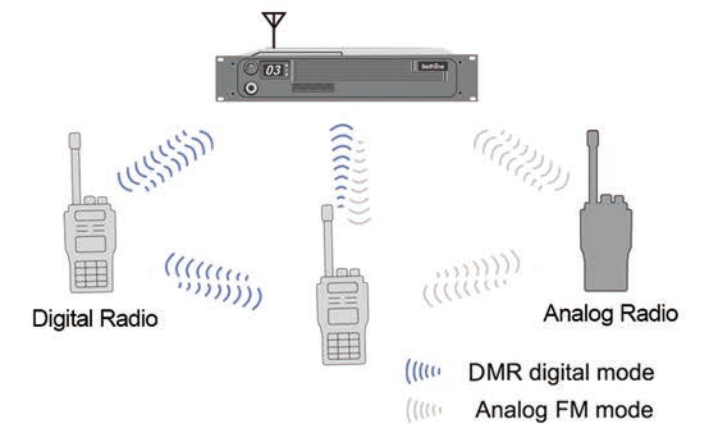
- 99 Channels
- Access Authentication
- 50W High Power
- Multi-tone Decode
- Color Code
- Digital/analog Self-adaption



TDMA True 2-Slots



Digital/analog Self-adaption



Standard Accessories



Antenna Connector



DC Power Supply Cord

Optional Accessories



Power Supply



Program Cable